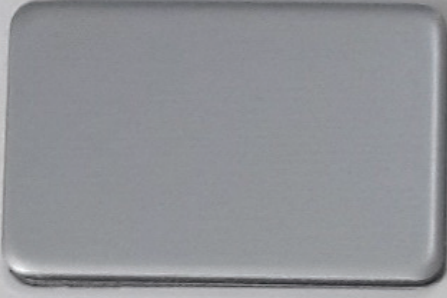


Modern görünümün mimarı...
The architect of the modern view...

ALUSISTAL
aluminium composite panel

metalik renkler
metallic colors

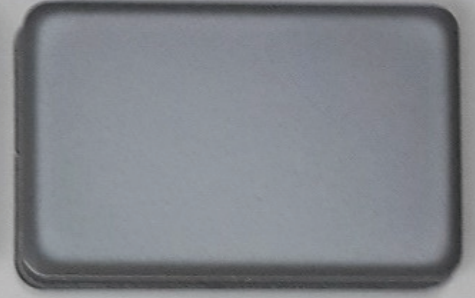
ASISTAL



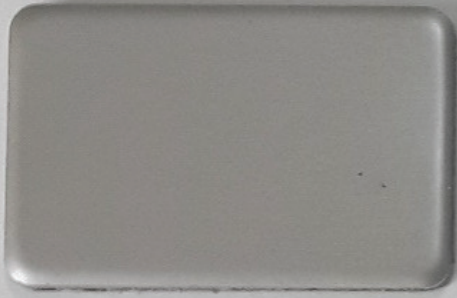
AS-906-1012 gümüş
silver A ■ L ■ S □



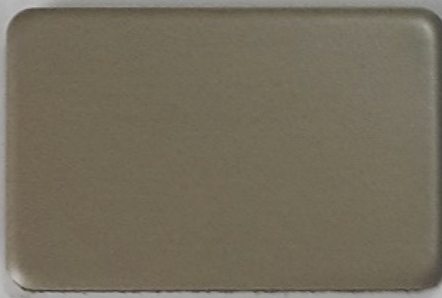
AS-B906-0912 parlak gümüş
bright silver A ■ L ■ S □



AS-950-1012 gri
grey A ■ L ■ S □



AS-930-0113 şampanya
champagne A ■ L ■ S □



AS-940-1012 bronz
bronze A ■ L ■ S □



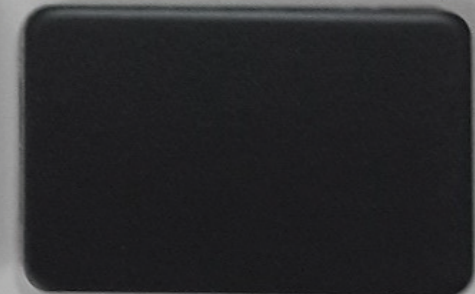
AS-823-0912 bakır
indiana copper A ■ L ■ S □



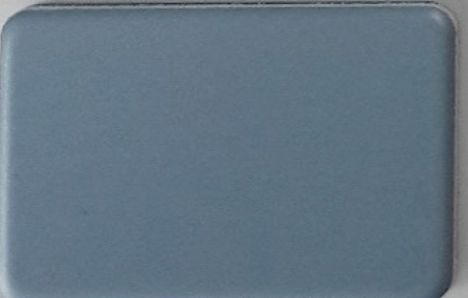
AS-907-0912 alüminyum gri
aluminium grey A ■ L ■ S □



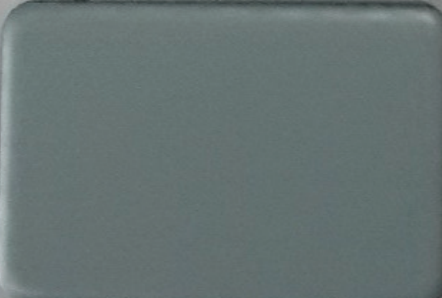
AS-935-0912 titanyum
titanium A ■ L ■ S □



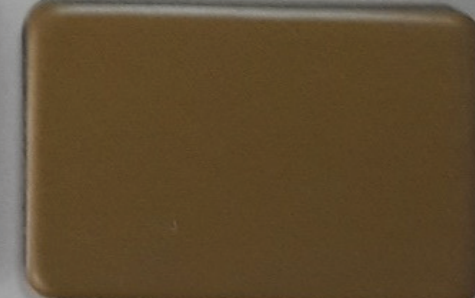
AS-M905-0912 metalik siyah
metallic black A ■ L ■ S □



AS-509-0912 azur mavi
azure blue A ■ L ■ S □



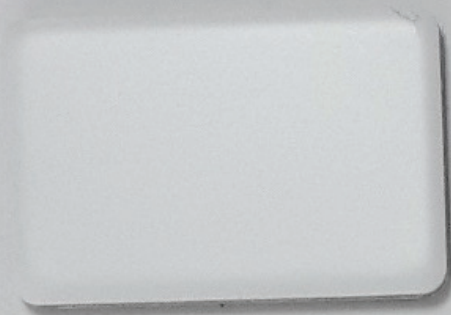
AS-010-0113 azur yeşil
azure green A ■ L ■ S □



AS-136-0213 altın
gold A ■ L ■ S □

solid renkler
solid colors

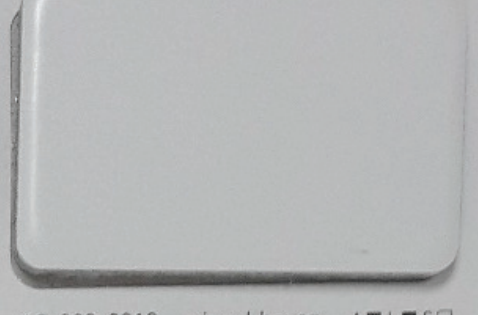
ASISTAL



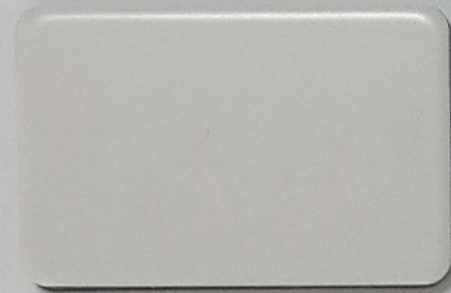
AS-916-1012 beyaz
traffic white A ■ L ■ S □



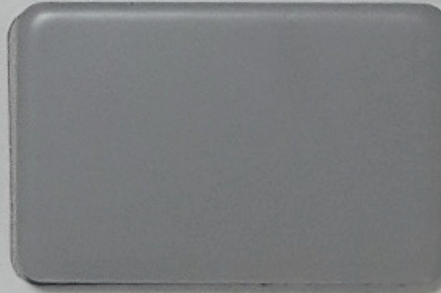
AS-910-0912 kirli beyaz
pure white A ■ L ■ S □



AS-903-0912 sinyal beyaz
signal white A ■ L ■ S □



AS-113-1012 inci beyazı
pearl white A ■ L ■ S □



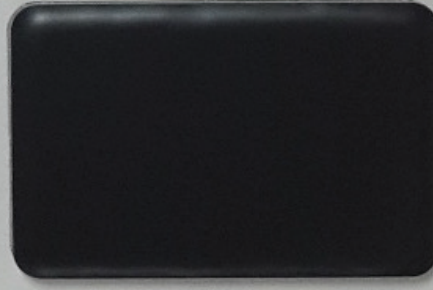
AS-736-0912 platin gri
platin grey A ■ L ■ S □



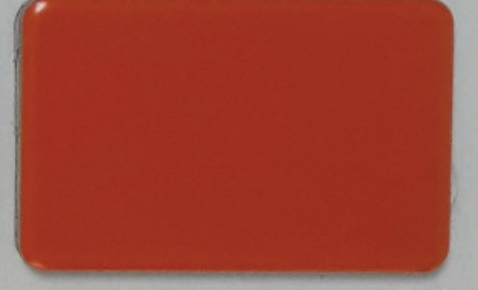
AS-722-0814 füme
dark grey A ■ L ■ S □



AS-716-0912 antrasit gri
anthracite grey A ■ L ■ S □



AS-905-0912 siyah
black A ■ L ■ S □



AS-209-0912 turuncu
traffic orange A ■ L ■ S □



AS-302-1012 kırmızı
traffic red A ■ L ■ S □

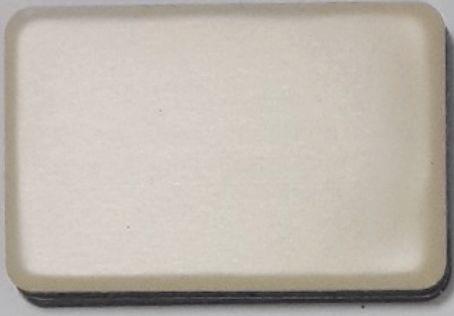


AS-303-1012 bordo
ruby red A ■ L ■ S □

Farklı zamanlarda üretilen aynı renk levhalarda ton farklılıkları olabilir.
There might be slight tone difference for the panel produced in different production batches.
Kartela renkleri ve üretim renkleri arasında ton farklılıkları olabilir.
There might be slight tone difference between color charts and production batches.

solid renkler
solid colors

ASISTAL



AS-114-0912 fildişi
ivory A ■ L ■ S □



AS-101-0912 bej
beige A ■ L ■ S □



AS-825-0912 açık kahverengi
light brown A ■ L ■ S □



AS-511-0912 çelik mavi
steel blue A ■ L ■ S □



AS-502-1012 mavi
ultramarine blue A ■ L ■ S □



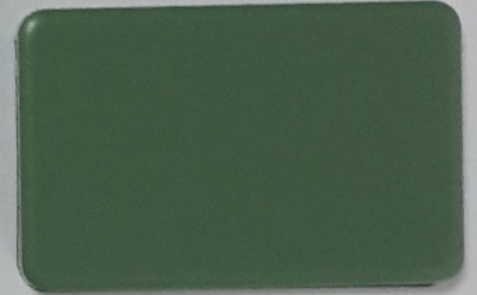
AS-510-0912 centiyana mavisi
gentian blue A ■ L ■ S □



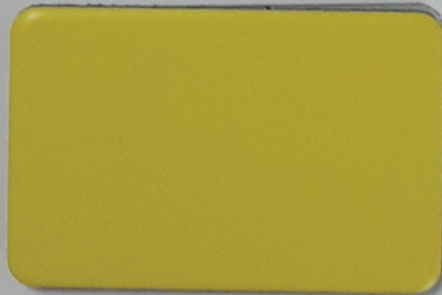
AS-735-0912 açık gri
light grey A ■ L ■ S □



AS-518-0912 turkuaz
turquoise blue A ■ L ■ S □



AS-611-0912 yeşil
green A ■ L ■ S □



AS-118-0912 sarı
yellow A ■ L ■ S □

ahşap görünümler wood looks

ASISTAL



AS-201-0912 teak
teak A ■ L ■ S □



AS-203-1013 koyu ceviz
walnut dark A ■ L ■ S □



AS-205-0114 koyu meşe
golden oak-dark A ■ L ■ S □



AS-202-0912 açık teak
teak-light A ■ L ■ S □



AS-204-0912 açık ceviz
walnut-light A ■ L ■ S □



AS-206-1013 açık meşe
golden oak-light A ■ L ■ S □

ayna görünümler / mirror efect



AS-207-0912 maun
mahogany A ■ L ■ S □



AS-LM001-1112 gümüş ayna
silver mirror A □ L □ S ■

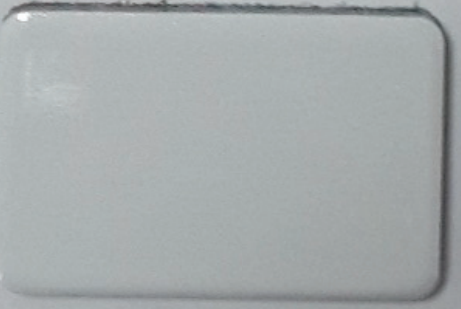


AS-LM002-1112 altın ayna
gold mirror A □ L □ S ■

simli renkler / sparkling colors



AS-605-1212 simli siyah
sparkling black A ■ L ■ S □



AS-606-0213 simli beyaz
sparkling white A ■ L ■ S □



AS-608-1013 simli kırmızı
sparkling red A ■ L ■ S □

Modern görünümün mimarı...

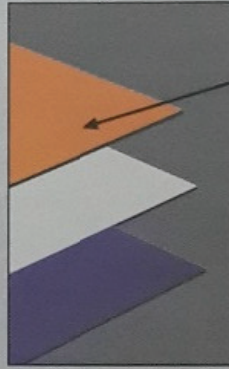
ASISTAL modern mimaride geniş bir uygulama alanına sahip alüminyum kompozit paneller konusunda uzmanlaşmış ve ortaya koyduğu projelerle de bunu kanıtlamıştır.

Hem yurt içinde, hem de yurt dışında mimari projelerde tercih edilen bir marka olan ASISTAL parlaklığı, renk alternatifleri, modern görünümü ile yapılara mükemmel uyum sağlamaktadır.

The architect of the modern view...

ASISTAL with a wide range of applications in modern architecture, specializing in aluminum composite panels and proved it with putting the revealed projects.

Domestically as well as abroad, ASISTAL brightness, color alternatives, modern appearance providing with the perfect structures is one of the preferred brand from the architectural projects .



Koruyucu Film
Protective film
Üst Boyalı Alüminyum
Top-coated aluminum
Yapıştırıcı
Adhesive
Polietilen
Polyethylene Core
Yapıştırıcı
Adhesive
Alt Alüminyum Tabaka
Lower Aluminum Layer
Astar
Undercoat



PANEL EBATLARI / PANEL SIZES

Standart Ebatlar /
Standard Sizes (mm) : 4 x 1.250 x 3.200
Kalınlık / Thickness (mm) : 3, 4, 6
Genişlik / Width (mm) : 1.000 x 1.250
Uzunluk / Length (m) : 6 metreye kadar / Up to 6 meters

TOLERANSLAR / TOLERANCES

Kalınlık / Thickness (mm) : ±0.2 (3, 4 kalınlık için)
(3, 4 for their thinness)
± 0.3 (6 kalınlık için / 6 for their thinness)
Genişlik / Width (mm) : ±2.0
Uzunluk / Length (mm) : ±4.0
Diagonal (mm) : <3.0 (Uzunluk /Length ≤ 2.500)
<5.0 (Uzunluk /Length > 2.500)

ASISTAL		
Kompozit Kalınlığı Composite Thickness	Alüminyum Kalınlığı Aluminum Thickness	Ağırlık Weight
3 mm	0,50 mm PVDF	4,5 kg/m ²
4 mm		5,5 kg/m ²
6 mm		7,3 kg/m ²